

LS 2 STREET

Displacement: 97cc
 Bore and Stroke: 38 x 43mm
 Number of Cylinders: 2
 Use: Street
 Cylinder Head Volume: 4.2cc
 P/N 327-11111-00-94
 Compression Ratio: 7.0 to 1
 Carburetor Size: VM 17 SC
 P/N 326-14102-00-00 Right Carburetor
 P/N 326-14101-00-00 Left Carburetor
 Ignition Timing: 1.8mm BTDC
 Spark Plug Heat Range: NGK B 7 HS

Special Parts:

Wide Ratio Transmission

LS 2 STREET

Port Diagram

Left Cylinder

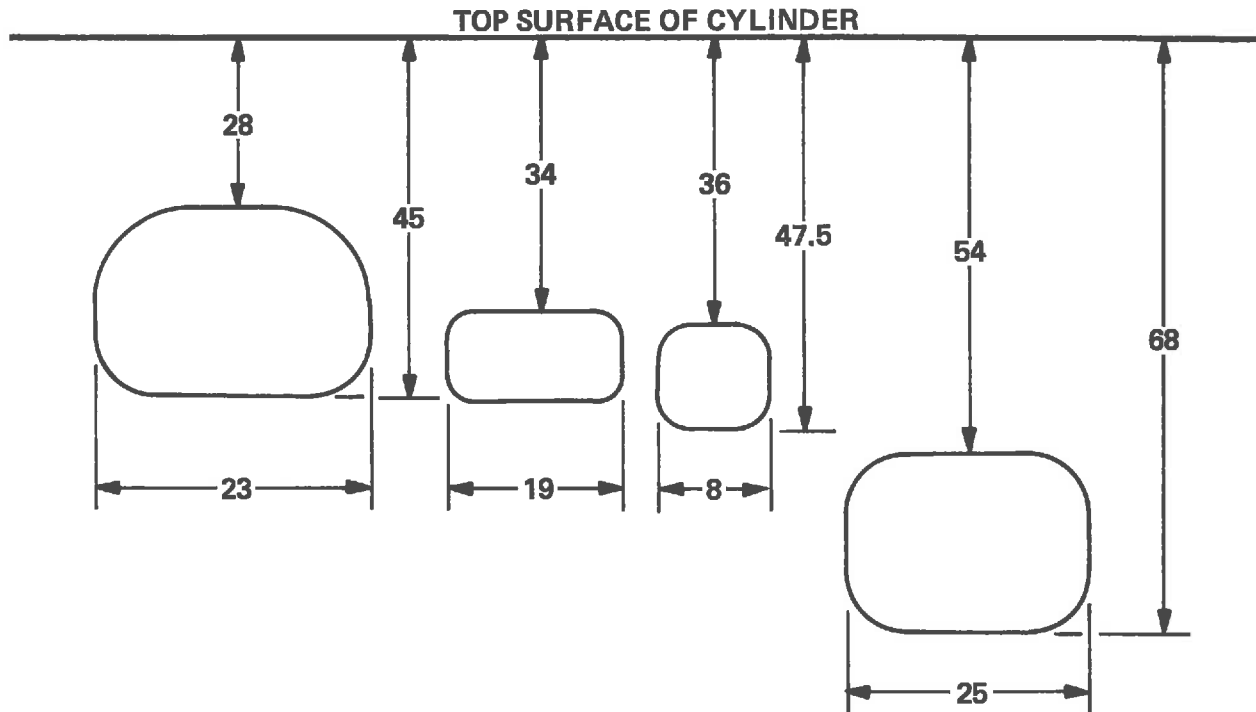
Part No. 327-11311-00-00

Right Cylinder

Part No. 327-11321-00-00

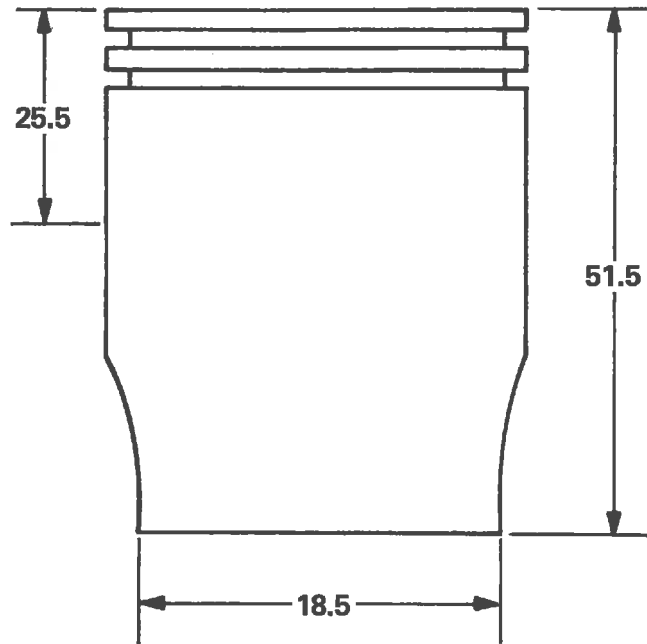
All Dimensions in Millimeters:

Tolerance: $\pm 0.5\text{mm}$



LS 2 STREET

Piston Diagram
Piston Part No. 327-11631-00-96
All Dimensions in Millimeters:
Tolerance: $\pm 0\text{mm}$



LS 2 SPECIAL

Displacement: 97cc
 Bore and Stroke: 38 x 43mm
 Number of Cylinders: 2
 Use: Road Racing and Short Track
 Cylinder Head Volume: 4.6cc
 P/N 327-11111-00-94
 Carburetor Size: VM 20 SC
 P/N 234-14101-00-00
 Ignition Timing: 2.0mm BTDC
 Spark Plug Heat Range: NGK B 11 HN

Special Parts:

Rods:

LS 2 Standard Rods, Modified with two slots 10mm long and 2mm wide

Bearings:

Rod Bearings big end.

Special Type —

See YL 1 GYT KIT

P/N OLD-10000-00-14

Ignition System:

Magneto Assembly See AS 2

GYT KIT P/N 183-81500-11-00

Clutch:

Friction Plate, five each

P/N 137-16321-70-00

Clutch Plate, four each

P/N 137-16325-70-00

Clutch Springs, five each

P/N 137-16333-70-00

Transmission:

LS 2 Transmission with special replacement gears,
 see AS 2 GYT KIT.

Fifth Pinion Gear

P/N 183-17151-70-00

Fifth Wheel

P/N 183-17251-70-00

Expansion Chambers:

Modified YL 1 expansion chambers will be used.

P/N 132-14610-10-00 Left Side.

P/N 132-14620-10-00 Right Side.

1972

LS 2 SPECIAL

Optional Equipment:

Chassis:

TA 125 Road Racer Chassis may be used.
P/N not available

Wheels:

CS 5 Wheels may be used.
See CS 5 Parts Book.

Brakes: Drum Type

Two Leading Shoes -- Front
P/N

Gas Tank:

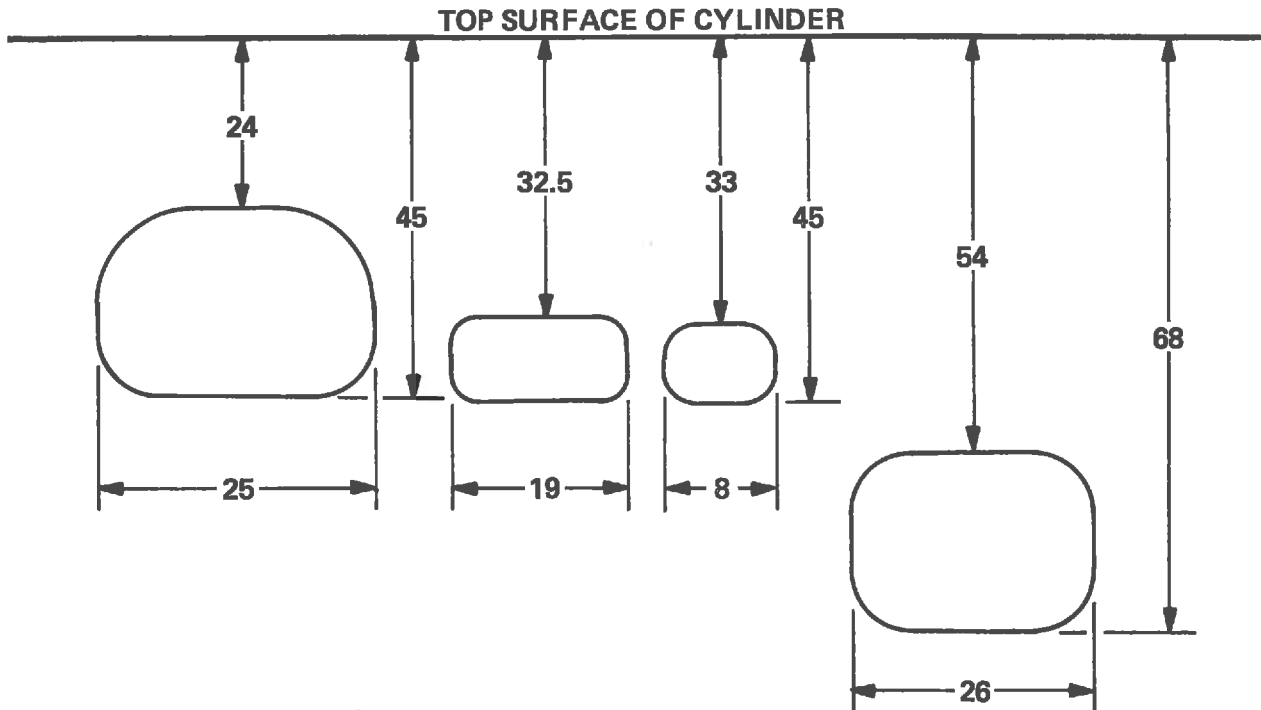
G 6 S Gas Tank Assembly
P/N 260-24110-00-31

NOTE

If using G 6 S Gas Tank Assembly, frame gas
tank mounts must be modified to accept tank.

LS 2 SPECIAL

Port Diagram
LS 2 Cylinder Used
Left Cylinder
Part No. 327-11311-00-00
Right Cylinder
Part No. 327-11321-00-00
All Dimensions in Millimeters:
Tolerance: $\pm 0.5\text{mm}$



1972

LS 2 SPECIAL

Piston Diagram

YL 1 Piston Used

See YL 1 GYT KIT

Piston Part No. 134-11631-70-00

Piston Ring

Part No. 134-11611-70-00

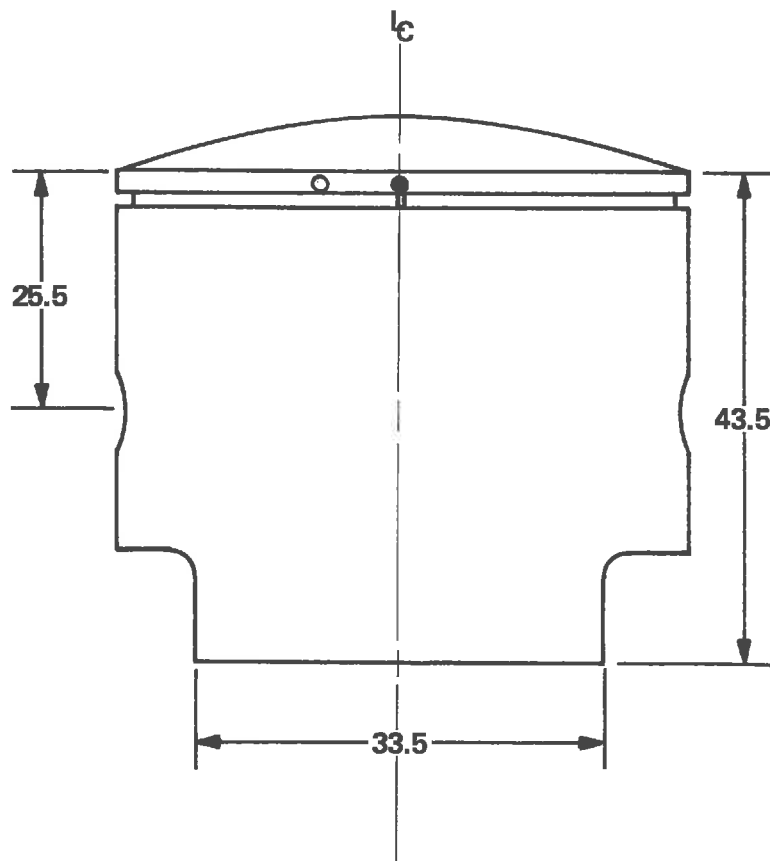
All Dimensions in Millimeters:

Tolerance: $\pm 0\text{mm}$

CAUTION

When YL 1 piston is used with LS 2 cylinder, ring gap must be relocated on centerline between rear transfer ports.

YL 1 piston has a dome top. Therefore, cylinder head volume will have to be increased.

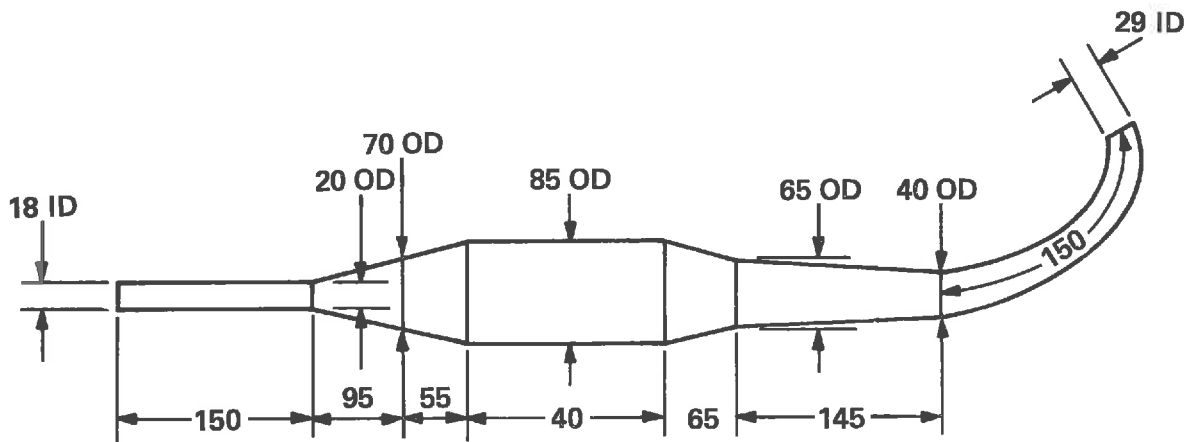


LS 2 SPECIAL

Expansion Chambers:
YL 1 GYT KIT Used
Right Expansion Chamber:
P/N 132-14610-10-00
Left Expansion Chamber:
P/N 132-14620-10-00
Material Thickness 1mm
All Dimensions in Millimeters:
Tolerance: $\pm 1.0\text{mm}$

NOTE

YL 1 GYT KIT Expansion Chambers must be modified to fit frame and cylinders.



TA 125 ROAD RACER

Model: TA 125 (LS 2 Engine Used)
 Displacement: 124cc
 Bore and Stroke: 43 x 43mm
 Number of Cylinders: 2
 Use: Road Race and Short Track
 Cylinder Head Volume: 5.8cc
 P/N – Not available
 Carburetor Size: VM 22
 P/N – Not available
 Ignition Timing: 2.0mm BTDC
 Spark Plug Heat Range: NGK B 10 EN

Special Parts:

Rods: TA 125
 Rods P/N not available
 LS 2 slotted. 10mm long and 2mm wide

Bearings:
 Rod Bearing Big End
 P/N OLD-10000-00-14

Ignition System:
 CDI Assembly
 P/N – not available

Clutch:
 TA 125 Clutch
 P/N – not available

Close Ratio Transmission
 P/N – not available

Expansion Chambers: TA 125
 P/N 307-14620-70-00 Right Side
 P/N 307-14610-70-00 Left Side

1972

TA 125 ROAD RACER

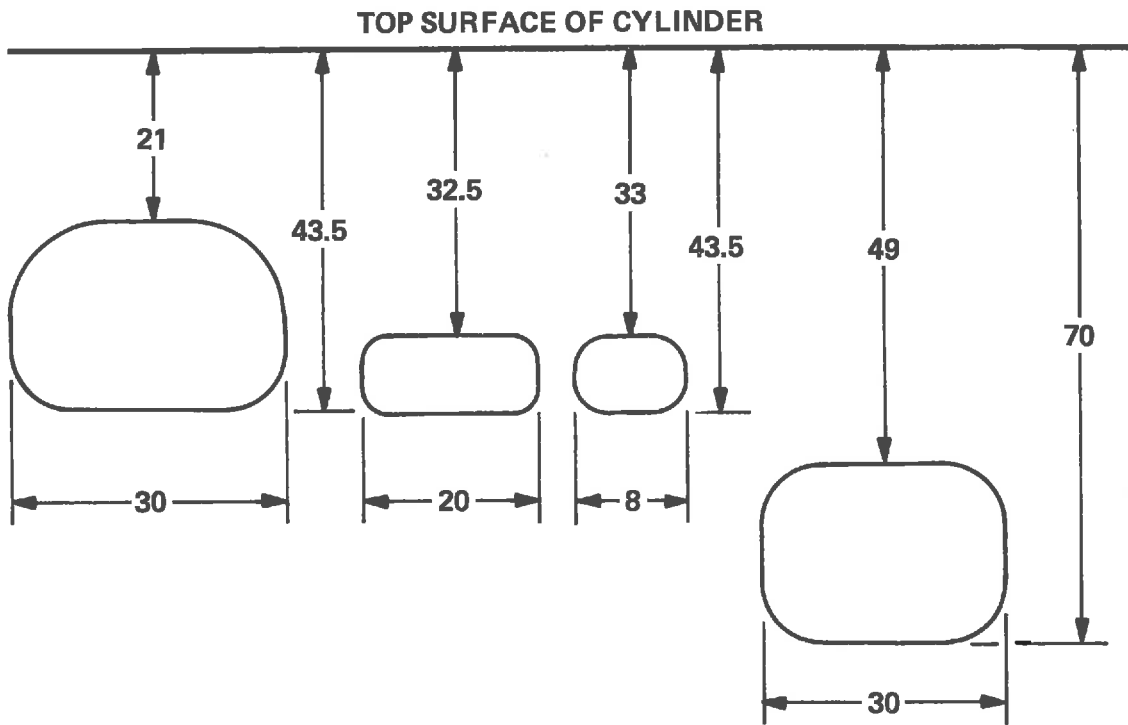
Optional Equipment:

(Part Numbers Not Available)

Chassis: TA 125
Wheels: TA 125
Brakes: TA 125
Gas Tank: TA 125
Fairing: TA 125

TA 125 ROAD RACER

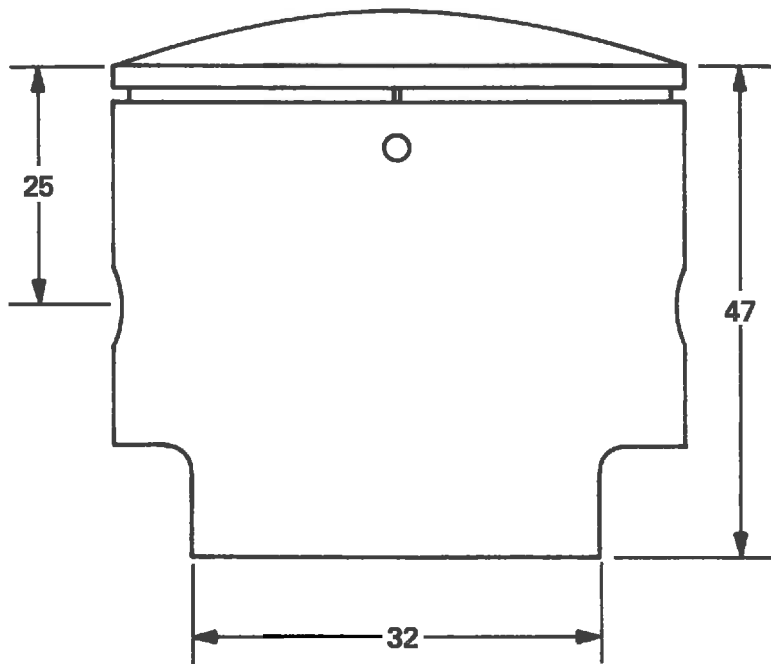
Port Diagram
TA 125 Cylinder Used
Right Cylinder
P/N 307-11321-70-00
Left Cylinder
P/N 307-11311-70-00
All Dimensions in Millimeters:
Tolerance: $\pm 0.5\text{mm}$



1972

TA 125 ROAD RACER

Piston Diagram
Piston Part No. 307-11631-70-96
All Dimensions in Millimeters:
Tolerance: $\pm 0\text{mm}$



TA 125 ROAD RACER

Expansion Chambers:

Right Expansion Chamber
P/N 307-14620-70-00

Left Expansion Chamber
P/N 307-14610-70-00

All Dimensions in Millimeters:

Tolerance: $\pm 1.0\text{mm}$

